

***newmat***<sup>®</sup>





# Stretch Ceiling and Wall Systems

---

NEWMAT	_____	P. 6
ABOUT US	_____	P. 8
NEWMAT PRODUCT GROUPS	_____	P. 11
NEWMAT CLASSIC	_____	P. 12
NEWMAT LIGHT	_____	P. 14
NEWMAT PERFORATED	_____	P. 16
NEWMAT GRAPHIC	_____	P. 18
NEWMAT ACOUSTIC	_____	P. 20
NEWMAT BIOPRUF	_____	P. 22
NEWMAT MESH	_____	P. 24
NEWMAT CLIP	_____	P. 26
SHAPES AND FORMS	_____	P. 32
TECHNICAL DETAILS	_____	P. 36
NEWMAT PROFILES	_____	P. 60
COLORS AND FINISHES	_____	P. 62

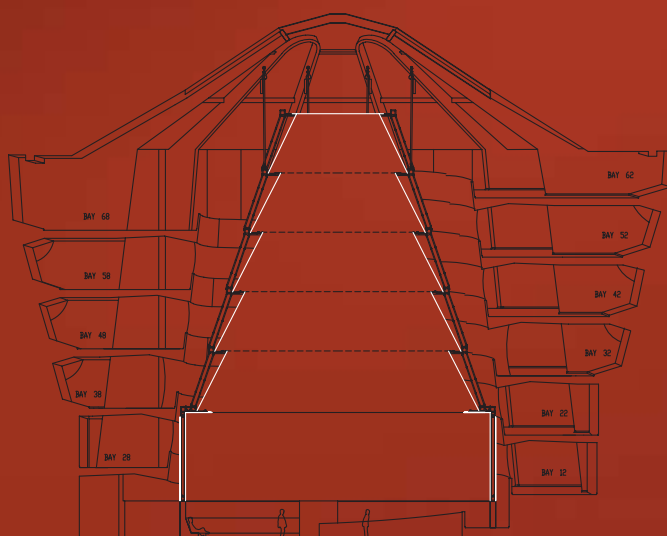
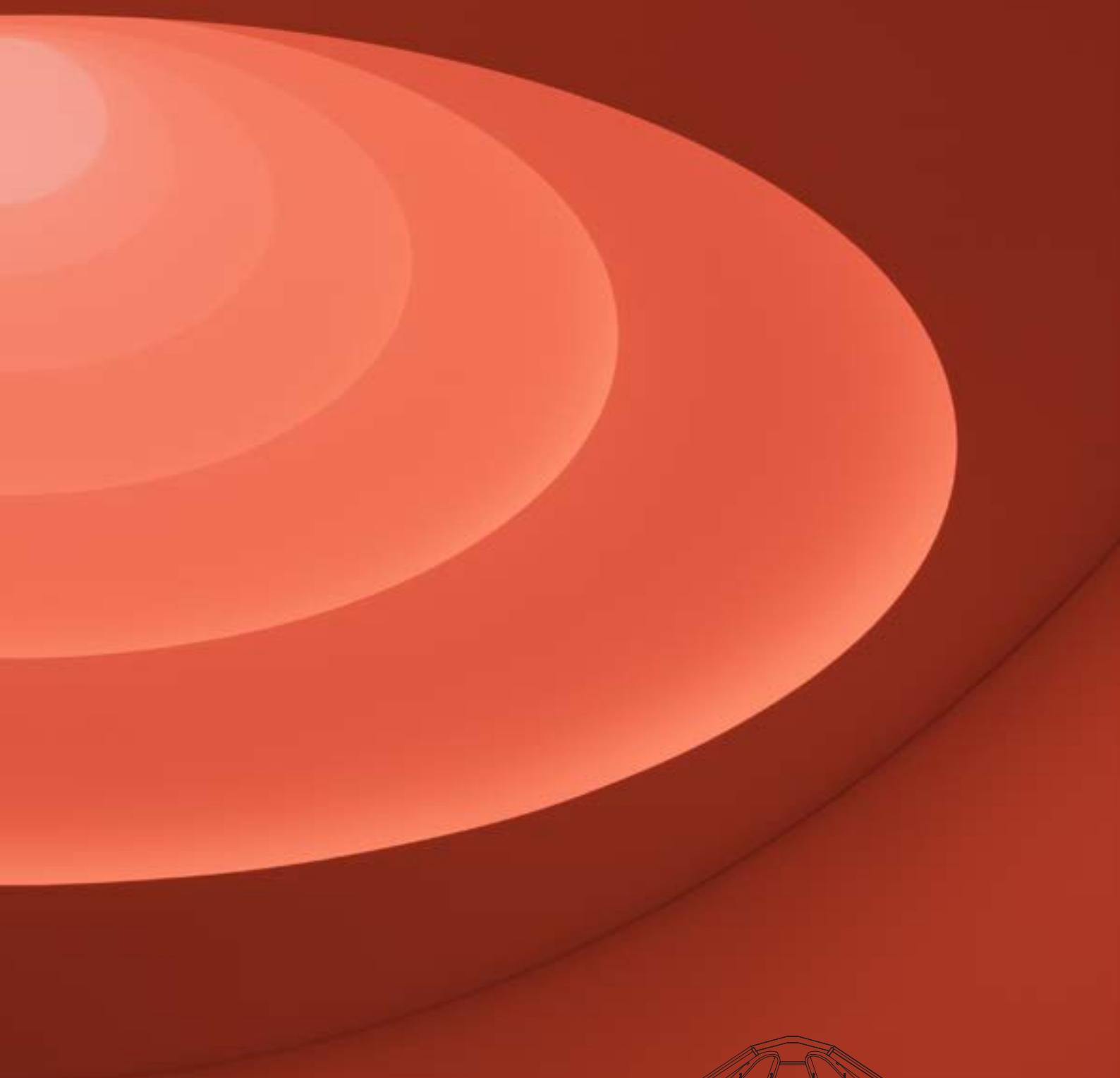
---

**Client** GUGGENHEIM Museum / New York, NY, USA

**Specifier** JAMES TURRELL / Artist

**Product** Newmat Acoustic 2 Layers ACM15 / White Matte and ACM20 / Black Matte, Micro-perforated Membranes





Newmat allows you to create beautiful and comfortable spaces without any need for compromise. Newmat offers timeless aesthetic and technical solutions.

---

Invented over 4 decades ago in Sweden, the stretch PVC ceiling system became an ideal remedy for damaged plaster ceilings. However, throughout the years its numerous aesthetic and technical advantages have made it the product of choice for unlimited applications.

For the last 30 years Newmat and its international network have provided the architectural, design, acoustical, and lighting communities worldwide with the most creative and technically advanced ceiling and wall systems on the market.

Because all the Newmat systems are custom made and highly sophisticated, they must be installed by our international network of licensed installers, who have been trained intensively to insure a quality installation and service to match the quality of the Newmat products.



# DYNAMIC.

Since our inception we wanted to guarantee a perfect quality product. In order to do so we had to implement a state of the art quality control system.

## Simple and maintenance friendly

Installed in a few hours this finished product does not require any taping, spackling, or painting, and it can be easily cleaned with standard household products if needed.

## Durable

The Newmat systems resist shocks and will not crack with movement or under stretch conditions. They can hold a great deal of water in case of leaks and will protect the space below from same.

## Flexibility

Because of the nature of the product, Newmat can be installed and/or removed quickly and easily, including complex curves, shapes, and 3D forms.

## Safe

The Newmat membranes and profiles have passed the most stringent fire and safety tests worldwide and are approved for use in any application. In the USA the Newmat membranes have a Class A fire rating per ASTM E84. The membrane has also been classified as non-toxic upon burning per the UPitt Protocol.

## Green

Newmat membranes are 100% recyclable and contain 42% pre-consumer recycled products. In addition, Newmat takes far less energy to manufacture and produces far less waste than any other ceiling system on the market. Newmat has been used on many LEED Certified Projects.

## Warranty

With Newmat come 30 years of experience at the top of innovation and quality standards. Your ceiling or wall has its own signature, making it easy to trace its complete origin. Newmat membranes come with a 10-year warranty against any welding defects in the perimeter edging or in the factory seams.



**Client** Gran Hotel / Ibiza, Spain

**Specifier** Owner Specified

**Product** Newmat Light TOB / White translucent membranes in 3D Form







# PRODUCT GROUPS.

---

We have divided our products into eight separate groups. Each group fulfills a specific technical or aesthetic need and was tailored to fit our clients' requirements. Our groups can be combined to respond to more than one need and offer a complete solution.

## **Newmat Classic** \_\_\_\_\_ Page 12

The Classic line consists of 150 membranes in various colors and finishes that are custom fabricated to fit your space and heat stretched into PVC or aluminum perimeter profiles with more than 40 options.

## **Newmat Light** \_\_\_\_\_ Page 14

These are translucent membranes in various colors and transparencies that are meant to be backlit by any light source of your choosing. Combining various membranes and using different light sources allows for unlimited lighting solutions. The diffusing ability of the Newmat membranes is unmatched by that of any other product.

## **Newmat Perforated** \_\_\_\_\_ Page 16

This perforated line can be used for aesthetic, acoustic, or air transfer purposes. The various perforation patterns can be applied to the type of membranes indicated.

## **Newmat Graphic** \_\_\_\_\_ Page 18

This is the ultimate in custom design solutions. Any of the Newmat membranes can be digitally printed with a graphic of your choosing to make your wall or ceiling look like a photograph, a painting, a piece of art, or simply your own creation.

## **Newmat Acoustic** \_\_\_\_\_ Page 20

This line offers a variety of micro-perforations that can be made on any of the Newmat membranes to provide exceptional sound absorption for optimal acoustical comfort. With or without acoustical backing, it can be tailored to achieve targeted absorptions at specific frequencies.

## **Newmat Biopruf** \_\_\_\_\_ Page 22

This powerful anti-germ, anti-fungus, anti-bacterial, and self-deodorizing process is embedded in the mass of the Newmat membrane; Biopruf will therefore remain active for the lifetime of the membrane and is ideal for any healthcare or chemical environment.

## **Newmat Mesh** \_\_\_\_\_ Page 24

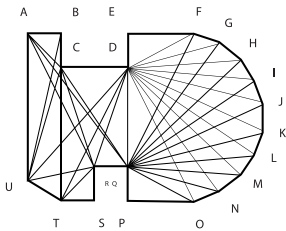
This is an architectural mesh system that can be used for ceiling or wall applications. Unlike other Newmat products, it can be installed outdoors as well as indoors. The mesh is custom cut to the size and configuration of your application with a variety of perimeter attachment options.

## **Newmat clip** \_\_\_\_\_ Page 26

Ideal for wall applications, this fabric system is field cut and installed without any need for a heat source. It offers better resistance to damage than the PVC membranes and comes in various colors and textures with a concealed perimeter clipping system.

# NEWMAT CLASSIC

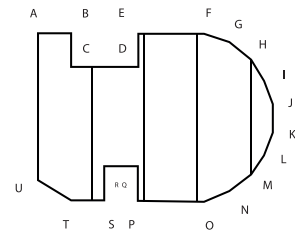
A line of flat, curved, shaped, or 3D ceilings in various colors and finishes with unlimited perimeter profile options. This is a simple concept from measuring to a complete installation which has proven itself in more than 54 countries.



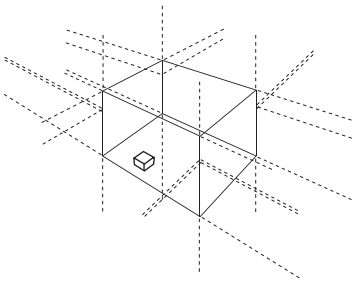
1. Measuring.



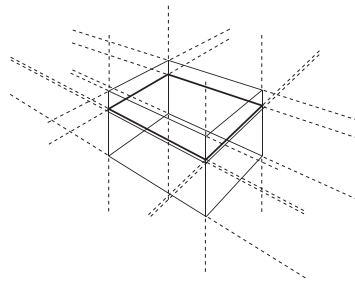
2. Engineering.



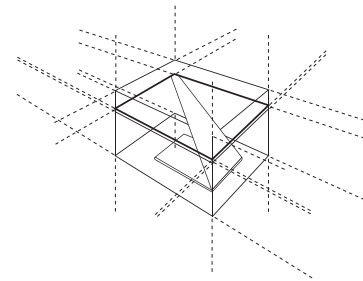
3. Fabricating.



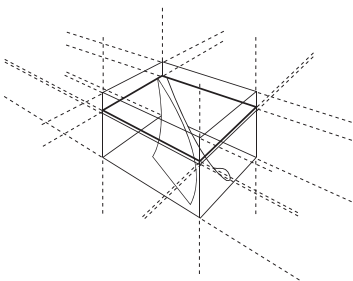
4. Delivering.



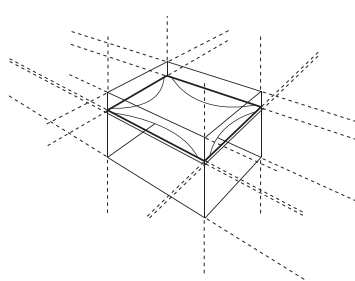
5. Installing the perimeter profiles.



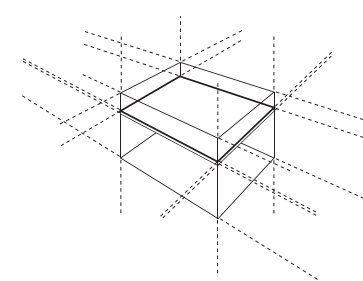
6. Unfolding the ceiling.



7. Inserting the corners.



8. Inserting the perimeter.

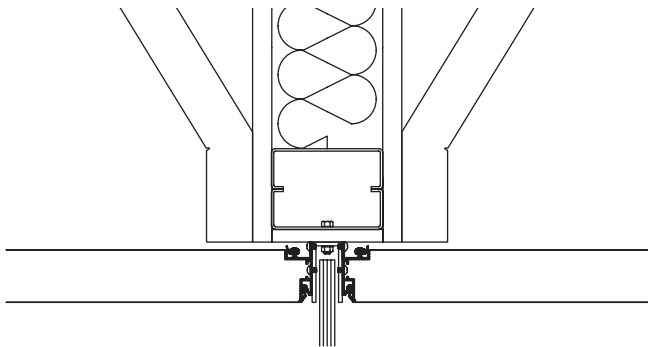
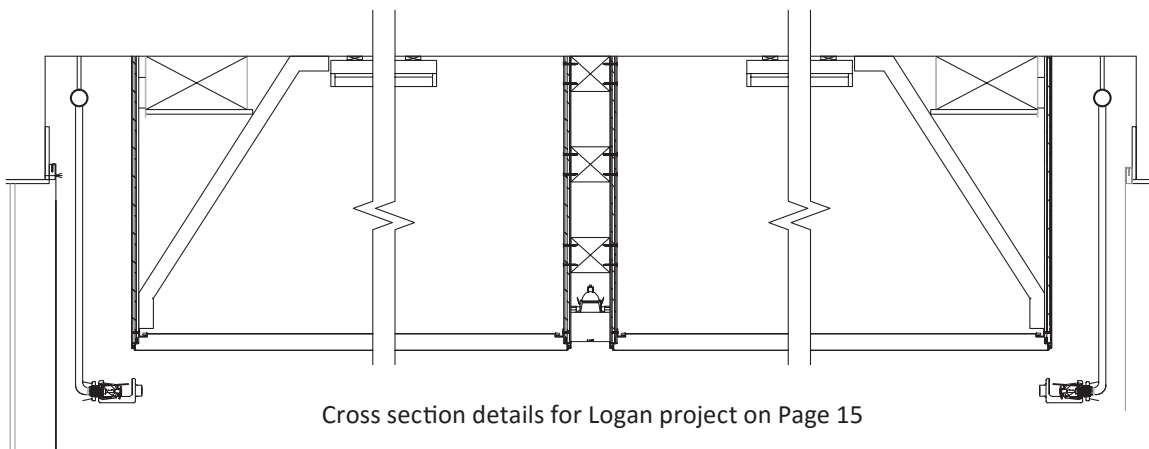


9. Installation complete.



# NEWMAT LIGHT

These are translucent membranes in various colors and transparencies that are meant to be backlit by any light source you choose: natural, fluorescent, LED, etc. Combining any two membranes and using different light sources allows for unlimited lighting solutions. The diffusing ability of the Newmat membranes is unmatched by that of any other product.



For all Newmat Light ceilings we strongly recommend the use of our double-layer system. The upper layer's main function is to be a dust barrier and insure the longevity of the aesthetic of the visible layer. The upper layer can be a clear membrane or a translucent membrane as well.

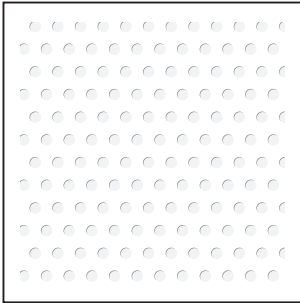




# NEWMAT PERFORATED

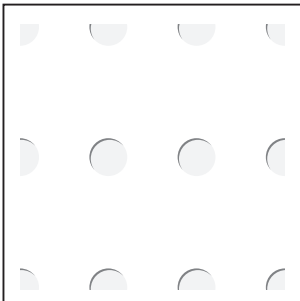
---

These perforated membranes can be used for aesthetic, acoustic, or air transfer purposes. The various perforation patterns can be applied to the type of membranes as indicated below.



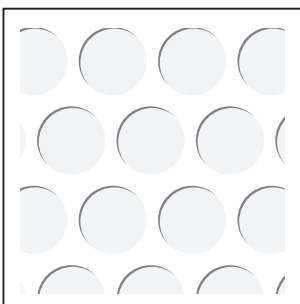
## Perfo 2

- Diameter 1.5 mm
  - 25 % opening
- Applicable on thick white matte, thick black matte, and all lacquer membranes.



## Perfo 3

- Diameter 4.5 mm
  - 11.5 % opening
- Applicable on all membranes.



## Perfo 5

- Diameter 9 mm
  - 53 % opening
- Applicable on thick white matte, thick black matte, and all suede membranes.







## NEWMAT GRAPHIC

---

This is the ultimate in custom design solutions. Any of the Newmat membranes can be digitally printed with a graphic of your choice to make your wall or ceiling look like a photograph, a painting, a piece of art, or simply your own creation.

Our digital printing is based on high resolution graphic files provided by our clients, with whom we work very closely to achieve not only the design and graphic intent but also a color match as perfect as possible. When the graphic involves a large area requiring factory seams, great care is taken to match the images at the seams and to make them as discreet as possible. Our high tech inks are UV protected and guaranteed 10 years for color fastening. We do not have any size limitation for our printing process.

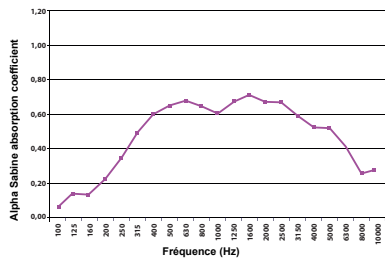
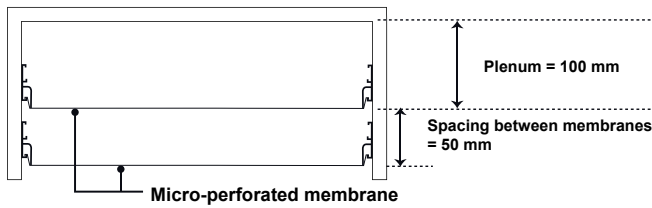




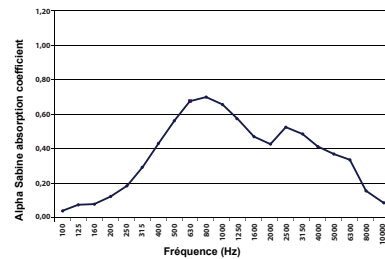
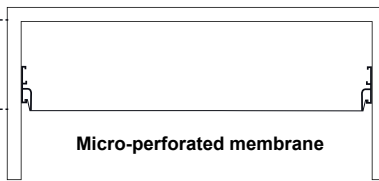
# NEWMAT ACOUSTIC

This line offers a variety of virtually invisible micro-perforations that can be added to any of the Newmat membranes to provide exceptional sound absorption for optimal acoustical comfort. With or without acoustical backing, it can be tailored to achieve targeted absorptions at specific frequencies. Comprised of 25,000 micro-holes per square foot, this Newmat patented system has amazed acoustical consultants worldwide.

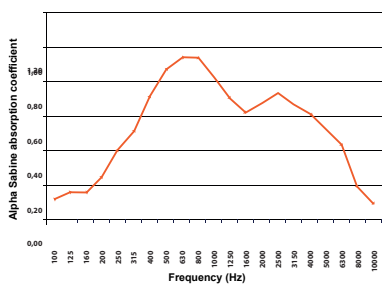
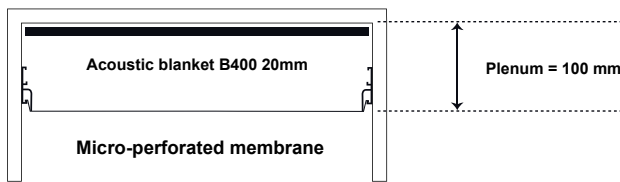
**NEWMAT ACOUSTIC** AlphaW = 0.65  
**Double membrane** NRC = 0.55



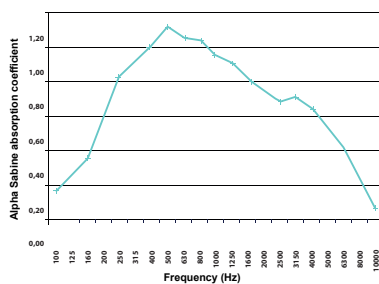
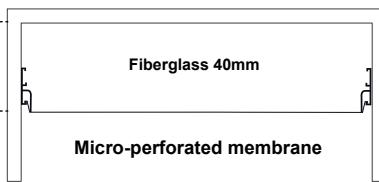
**NEWMAT ACOUSTIC** AlphaW = 0.45  
**Single membrane** NRC = 0.45



**NEWMAT ACOUSTIC** AlphaW = 0.75  
**+ Blanket** NRC = 0.75



**NEWMAT ACOUSTIC** AlphaW = 0.75  
**+ Fiberglass** NRC = 0.90





# NEWMAT BIOPRUF

---

This powerful anti-germ, anti-fungus, anti-bacterial, and self-deodorizing treatment is embedded in the Newmat membrane.

Biopruf will therefore remain active for the lifetime of the membrane, making it ideal for any healthcare or chemical environment.

Biopruf is a well known and highly respected process that guarantees a long-term effective solution without compromising the aesthetic aspect of the membranes.





# NEWMAT MESH

---

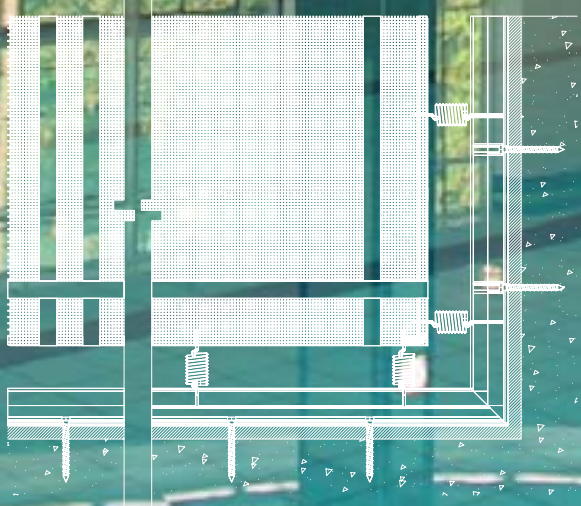
This architectural system can be used for ceiling or wall applications. Unlike the other Newmat products, it can be installed outdoors as well as indoors.

The mesh is custom cut to the size and configuration of your application with a variety of perimeter attachment options.

We offer different mesh patterns, some of which provide excellent acoustical absorption on their own.



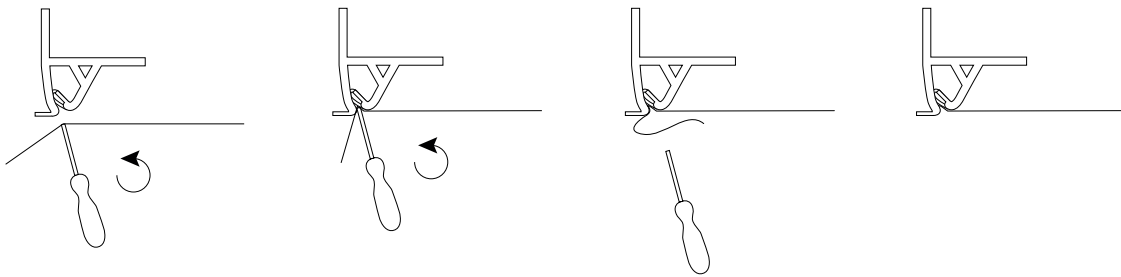




## NEWMAT CLIP

---

Ideal for wall applications, this fabric system is field cut and installed without any need for a heat source. It offers the best resistance to damage of all our membranes and comes in various colors and textures with a concealed perimeter clipping system. It can also be used for ceilings and be combined with acoustical or thermal insulation backing materials. Newmat Clip makes an ideal canvas for printing large areas up to 10 feet x 25 feet. We offer a few different options for the concealed perimeter clipping system, and the fabric can be cut to accommodate any type of penetration such as lights, sprinklers, registers, etc.





**Client** Olabuenaga Chemistri / Mexico City, Mexico  
**Specifier** Gardunos Arquitectos / Architect  
**Product** Newmat Acoustic ACL21 / Red Vermillion Lacquer Micro-Perforated Membrane





**Client** Trading Firm Office / Chicago, IL, USA  
**Specifier** Perkins + Will Architects / Architect  
**Product** Newmat Light 2 Layers T0B / White Translucent and T10 / Clear Membranes





# SHAPES & FORMS.

Because of the flexibility of our membranes, Newmat systems are ideal for easily creating curves, shapes, forms, and 3-dimensional ceilings, walls, and floating elements.





Having our own sophisticated metal shop allows us to create the complex aluminum skeletons and structures often needed to achieve the design intents of our clients.

---



**Client** Little Theater At St. John's University / Queens, NY, USA  
**Specifier** Lu + Bibliowicz Architects / Architect  
**Product** Newmat Light 2 Layers TOB / White Translucent Membranes



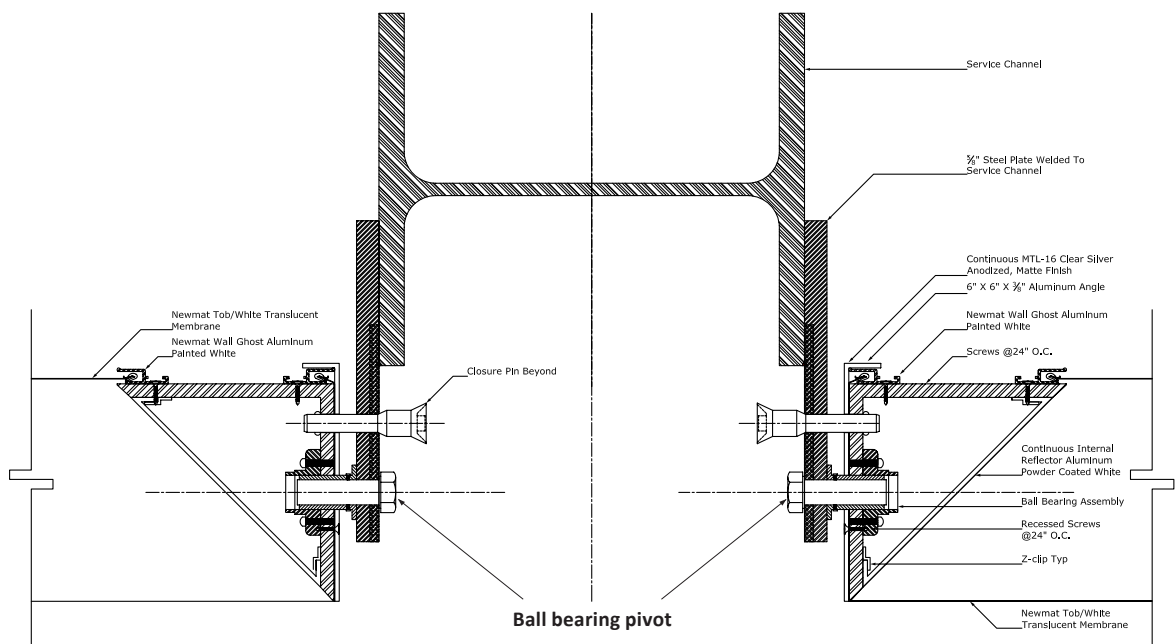




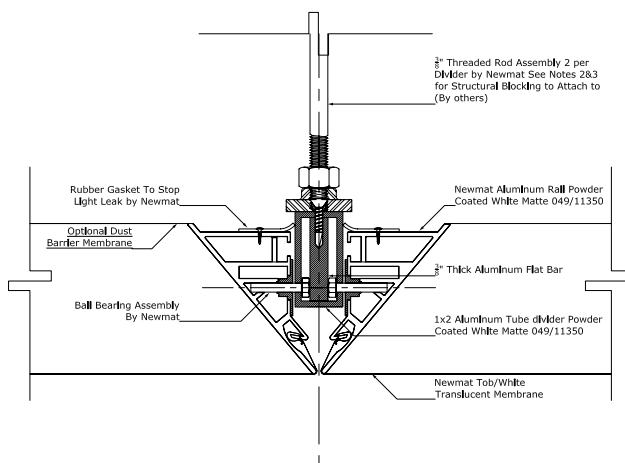
# DETAILS.

Below are some of the details we have engineered for our projects. We often create and extrude new profiles to meet the design or technical needs of a specific project.

## LARGE PIVOT PANEL SYSTEM



## SMALL PIVOT PANEL SYSTEM



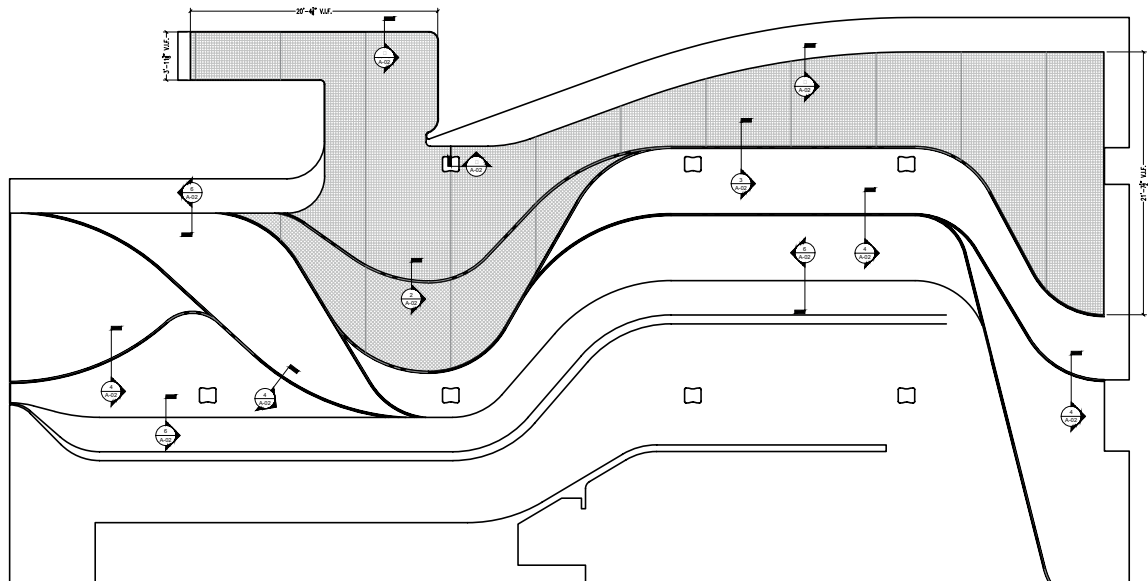
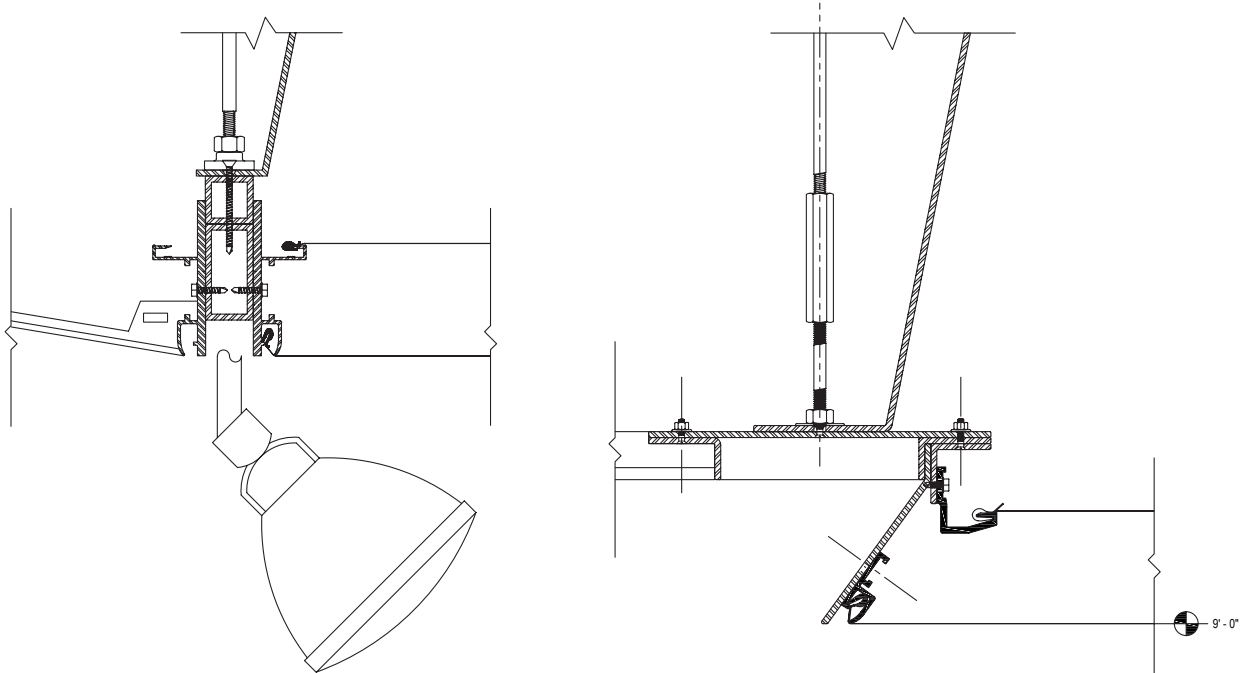
**Client** Museum of Fine Art / Boston, MA, USA  
**Specifier** Foster + Partners / Architect  
**Product** Newmat Light 2 Layers & Newmat Acoustic ACTOB / White Translucent Micro-Perforated Membranes



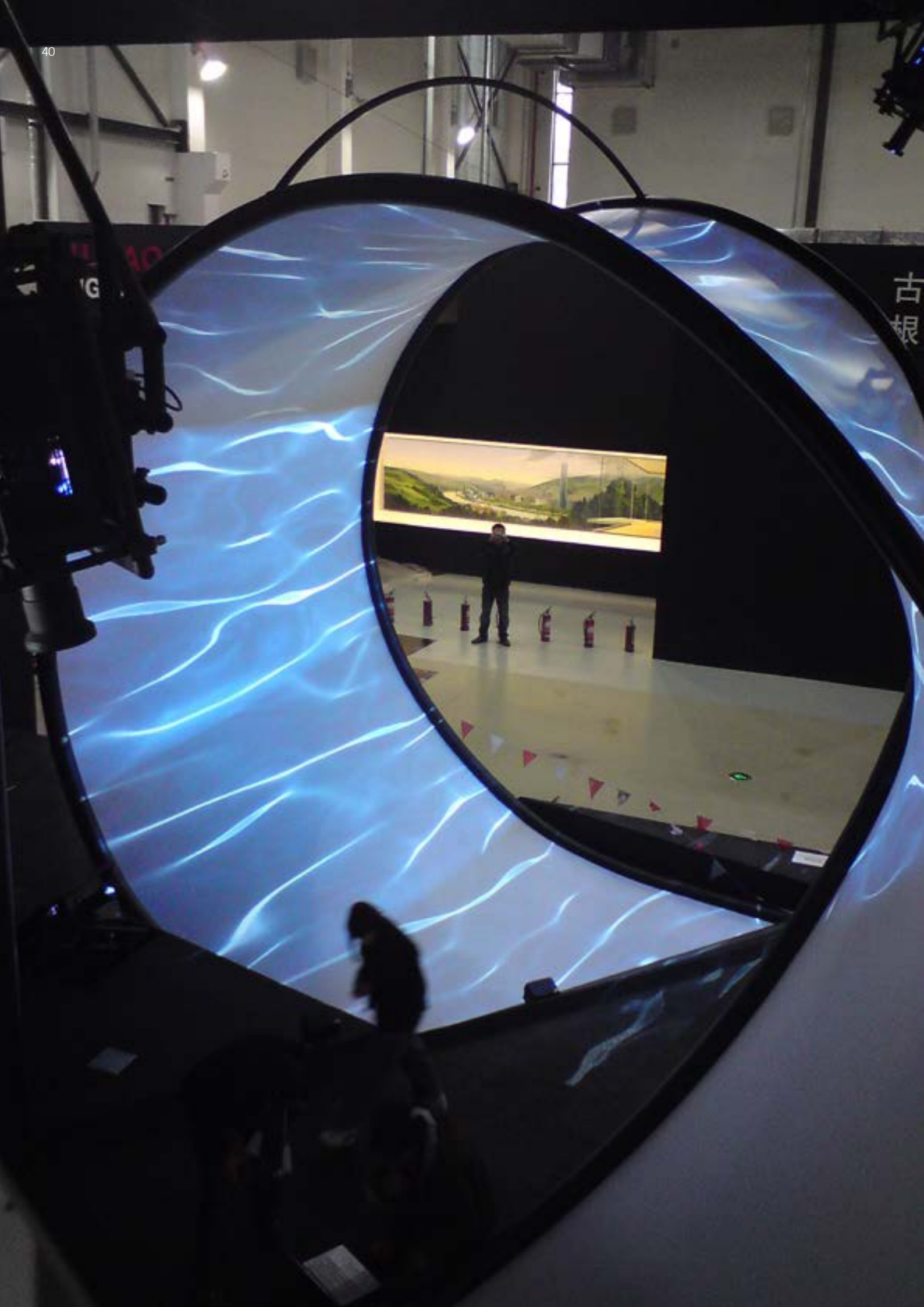
# DETAILS.

Below are some of the details we have engineered for our projects. We often create and extrude new profiles to meet the design or technical needs of a specific project.

## CUSTOM LIGHT TROUGH AND EDGE DETAIL



**Client** Collector's Loft / New York, NY, USA  
**Specifier** Renfro Design Group / Lighting Designer  
**Product** Newmat Light 2 Layers TOB4 / Warm White Translucent Membranes



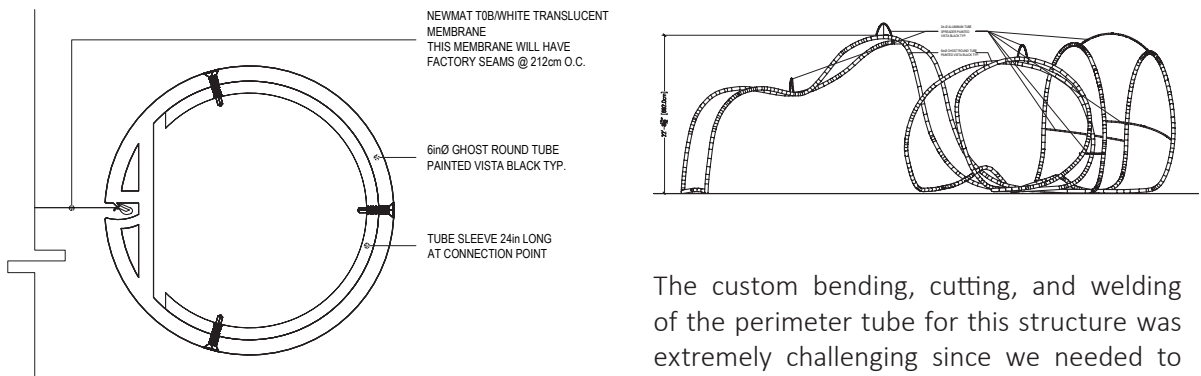
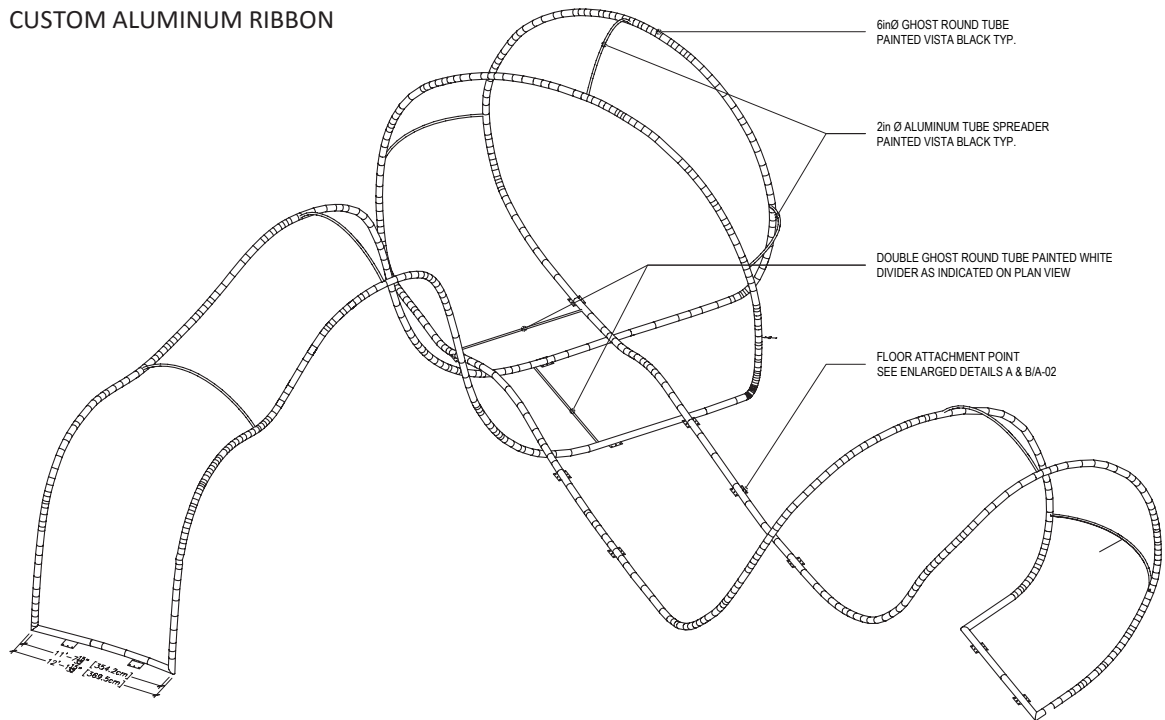
古  
根



# DETAILS.

Below are some of the details we have engineered for our projects. We often create and extrude new profiles to meet the design or technical needs of a specific project.

## CUSTOM ALUMINUM RIBBON



The custom bending, cutting, and welding of the perimeter tube for this structure was extremely challenging since we needed to keep the harpoon receiver groove in the tube centered at all times so that the membrane would follow a perfectly defined path.

-5  
1-34

62

62

→

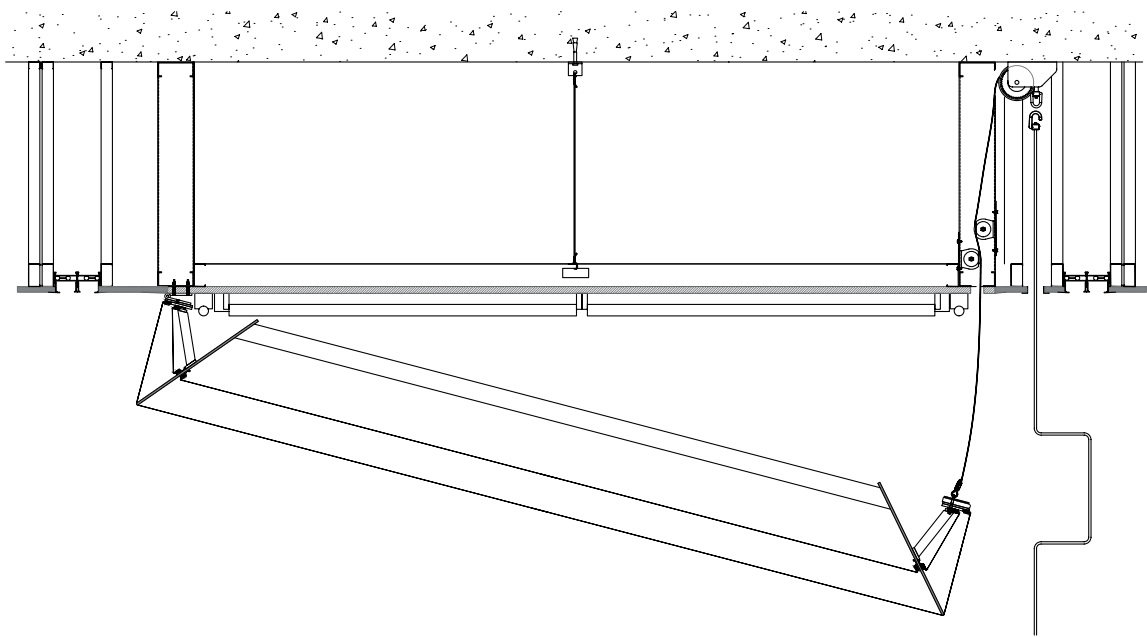
35-47



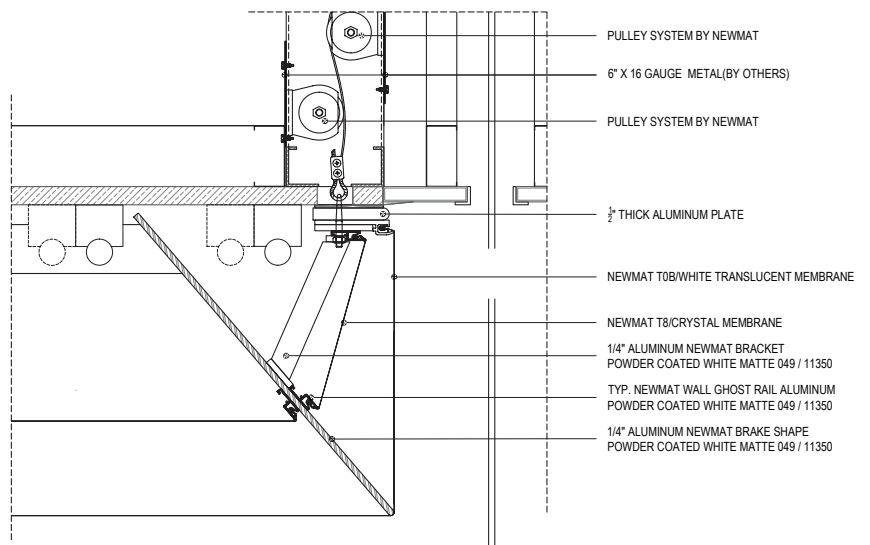
# DETAILS.

Below are some of the details we have engineered for our projects. We often create and extrude new profiles to meet the design or technical needs of a specific project.

## 3-DIMENSIONAL ACCESSIBLE LIGHT BOXES



While this project specified a mechanical pulley system to open the Newmat light box to access the lighting, on other similar projects we have provided electrical winch systems to achieve the same access by simply pressing a wall switch.



**Client** Devon Energy Tower / Oklahoma City, OK, USA

**Specifier** Kendall/Heaton Associates / Architect

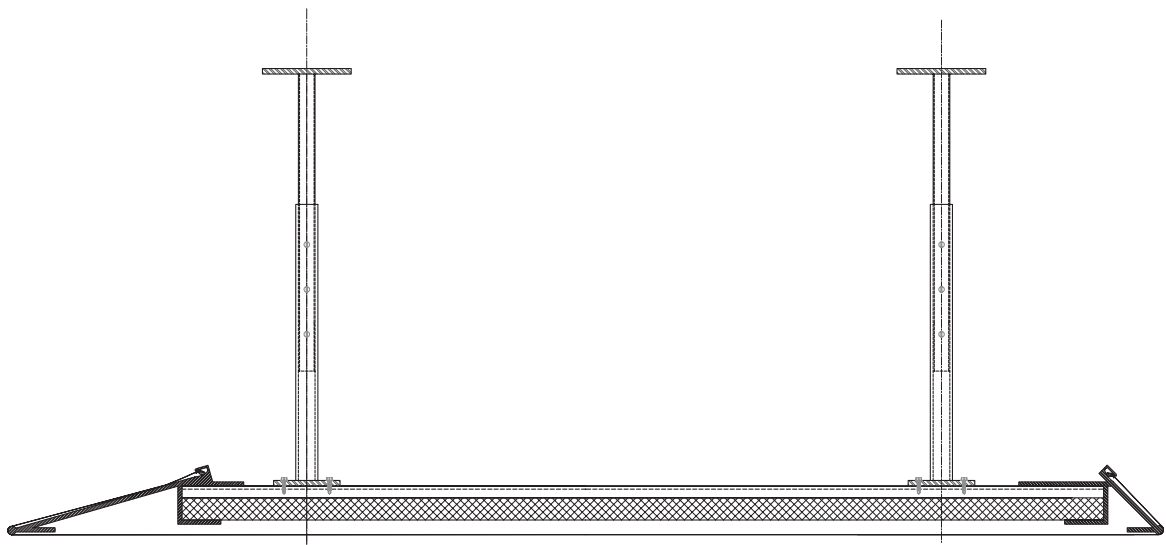
**Product** Newmat Light 2 Layers TOB / White Translucent and T8 / Clear Membranes Over a Custom 3D Aluminum Skeleton



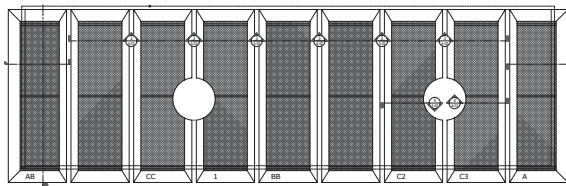
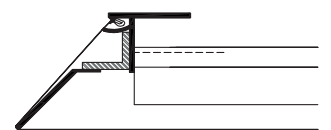
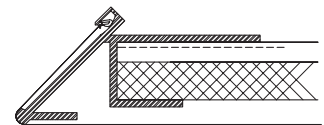
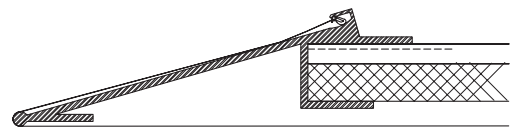
# DETAILS.

Below are some of the details we have engineered for our projects. We often create and extrude new profiles to meet the design or technical needs of a specific project.

## FLOATING PANELS WITH KNIFE EDGE PERIMETERS



We offer knife edge profiles in 13, 30, and 45 degree options. Since we cannot radius these profiles for horizontal curves, we recreate them from curved metal components assemblies when needed.



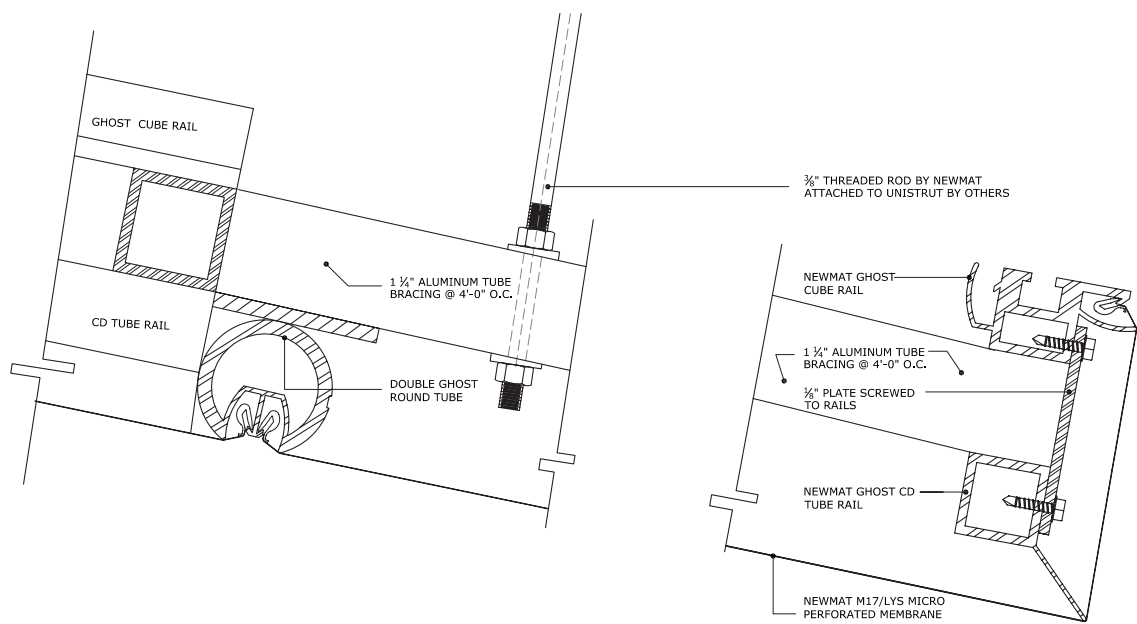
**Client** Cielo Restaurant / Boca Raton, FL, USA  
**Specifier** Bentel & Bentel Architects / Architect  
**Product** Newmat Classic L101 / White Lacquer Membranes



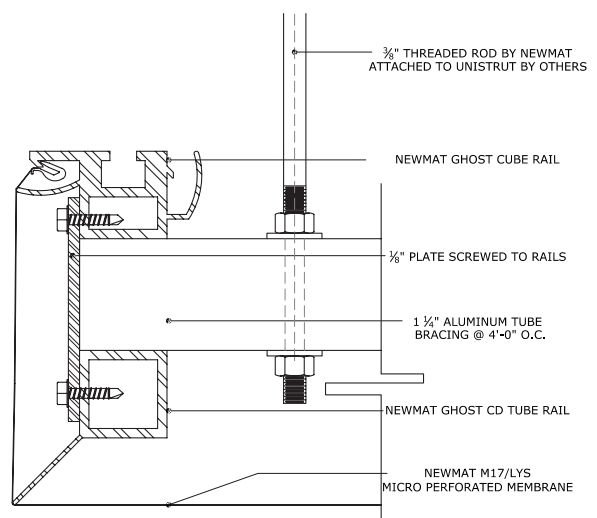
# DETAILS.

Below are some of the details we have engineered for our projects. We often create and extrude new profiles to meet the design or technical needs of a specific project.

## FLOATING COMPOUND CURVED ACOUSTICAL STRUCTURE



This structure was built in our metal shop, separated into six segments that were shipped to the jobsite, elevated into place and reassembled. The membranes were then stretched over it.



**Client** WGBH / Boston, MA, USA

**Specifier** Polshek Partnership Architects / Architect

**Product** Newmat Acoustic ACM17 / Lys Matte Micro-Perforated Membrane Over Custom Skeleton

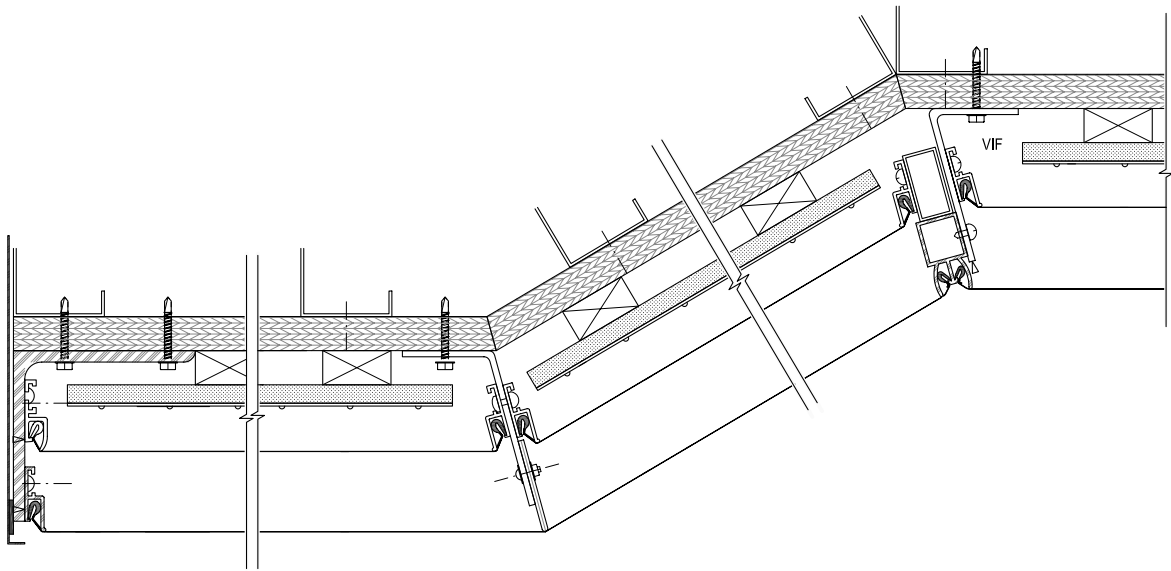




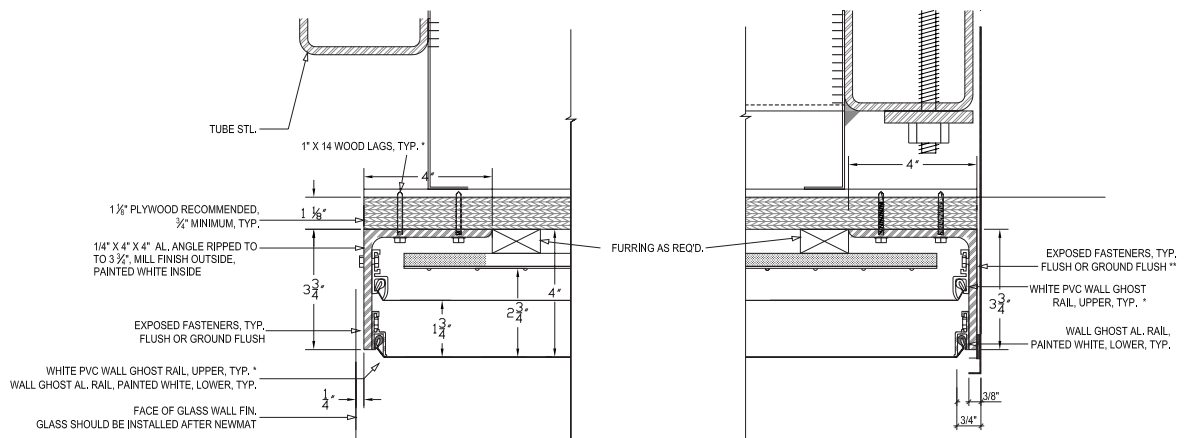
# DETAILS.

Below are some of the details we have engineered for our projects. We often create and extrude new profiles to meet the design or technical needs of a specific project.

## BACKLIT DOUBLE-LAYER SLOPED CEILINGS



## LUMINOUS SYSTEM PERIMETER CONDITIONS AT WALL AND AT GLASS GUARD RAIL



**Client** Khosla Ventures / Menlo Park, CA, USA  
**Specifier** Paul Murdoch Architects / Architects  
**Product** Newmat Light 2 Layers TOB / White Translucent and T8 / Clear Membranes

# ACURA

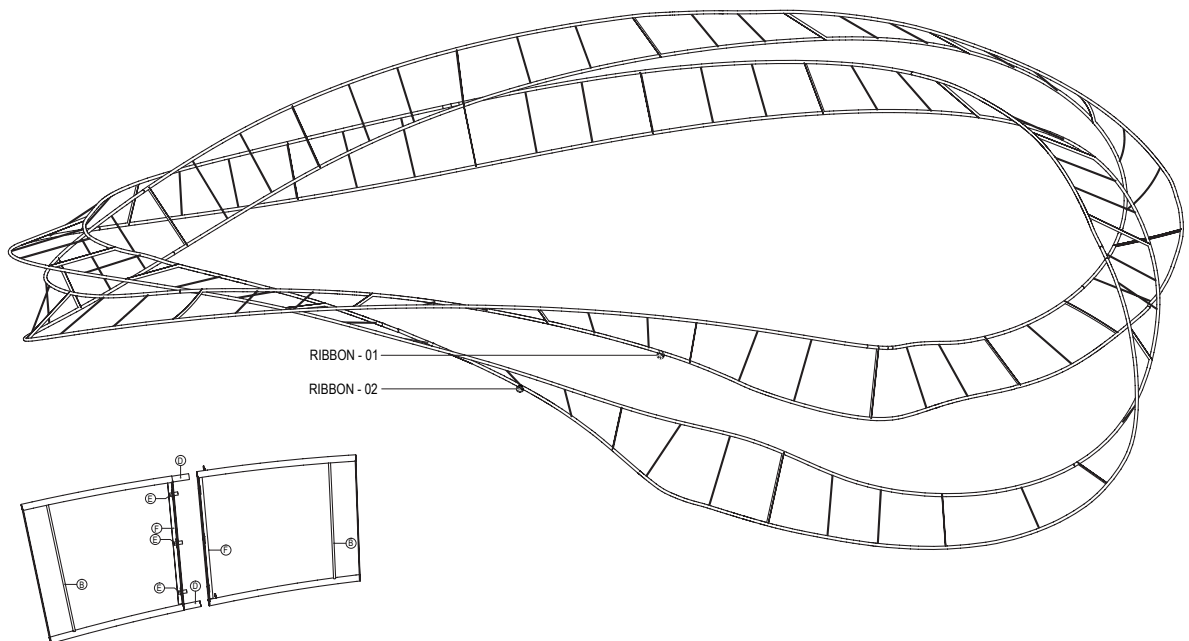
PRECISION AND PERFORMANCE



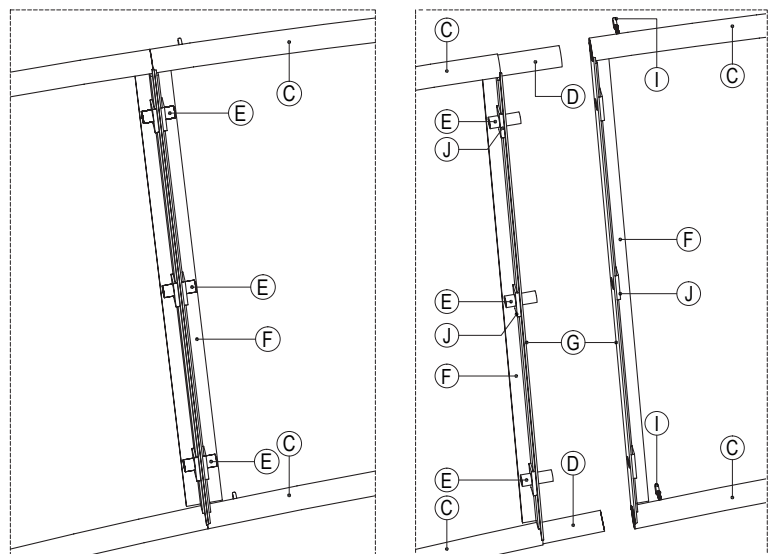
# DETAILS.

Below are some of the details we have engineered for our projects. We often create and extrude new profiles to meet the design or technical needs of a specific project.

## MEMBRANE-WRAPPED CURVED PANEL ASSEMBLY



The demands of a traveling exhibit are taxing on all its components. We needed to engineer panels that could be assembled and disassembled for each car show as quickly and easily as possible.



**Client** ACURA Exhibit at LA Auto Show / Los Angeles, CA, USA

**Specifier** George P. Johnson / Designer

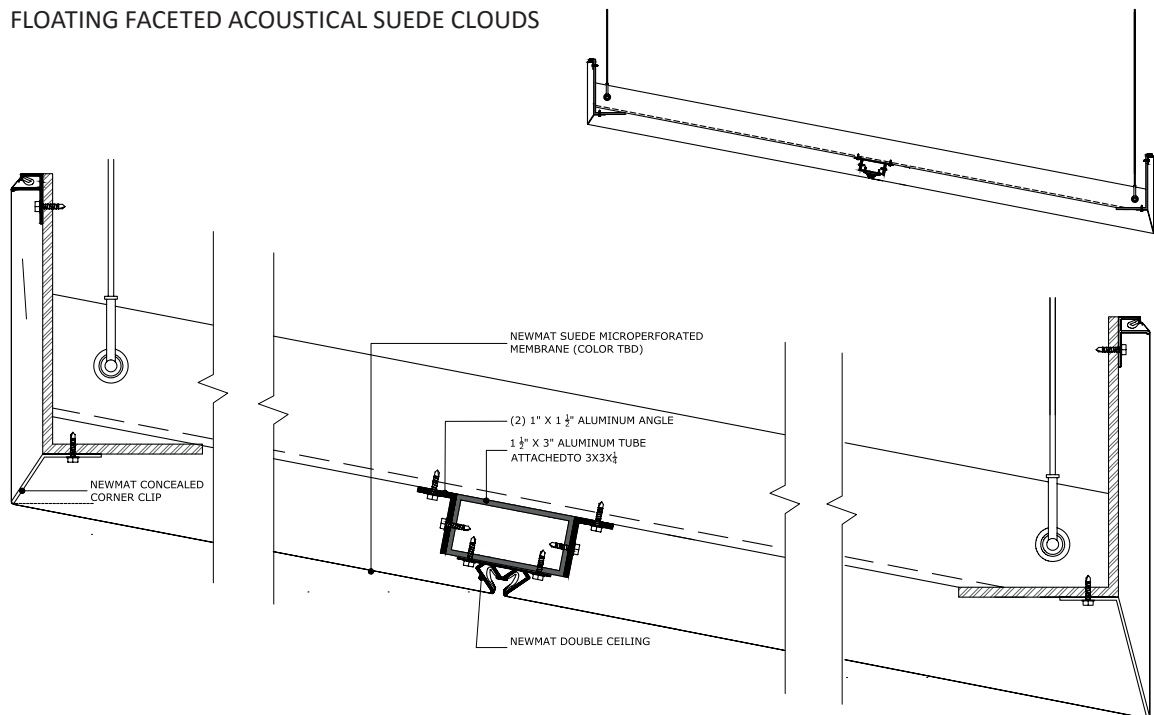
**Product** Newmat Classic & Newmat Graphic R30 / Satin Grey Metallic and S600 / White Satin With Wood Veneer Graphic Membranes



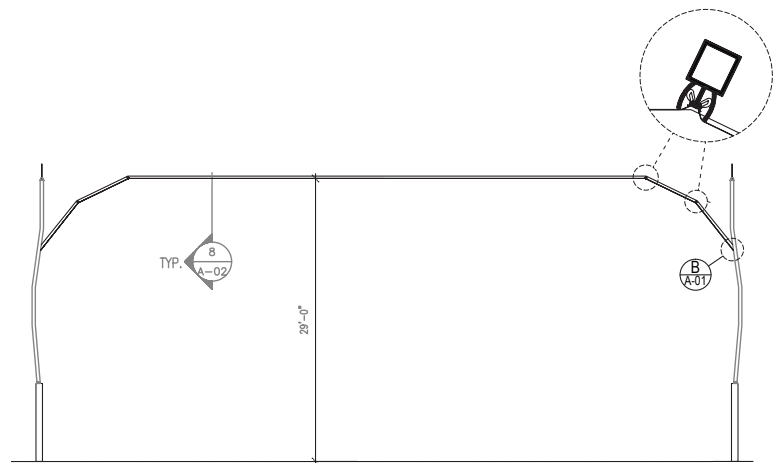
# DETAILS.

Below are some of the details we have engineered for our projects. We often create and extrude new profiles to meet the design or technical needs of a specific project.

## FLOATING FACETED ACOUSTICAL SUEDE CLOUDS



These clouds are constructed with concealed steel frames filled with fiberglass and wrapped with 4,500 square feet of NewAcoustic DF09/Tabac micro-perforated suede membranes stretched into concealed ghost rails.



**Client** Chanhassen High School / Chanhassen, MN, USA

**Specifier** Perkins + Will / Architect

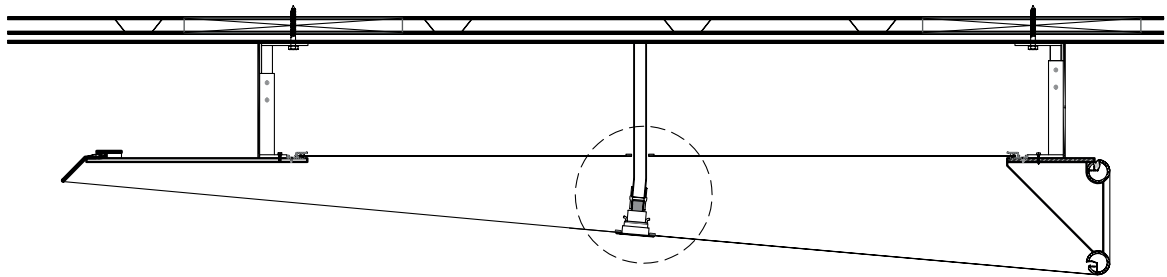
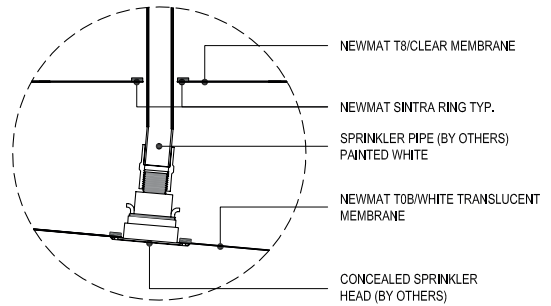
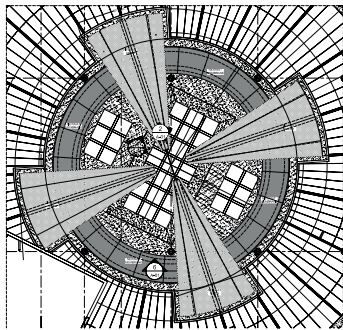
**Product** Newmat Acoustic ACDF09 / Tabac Suede Micro-Perforated Membranes



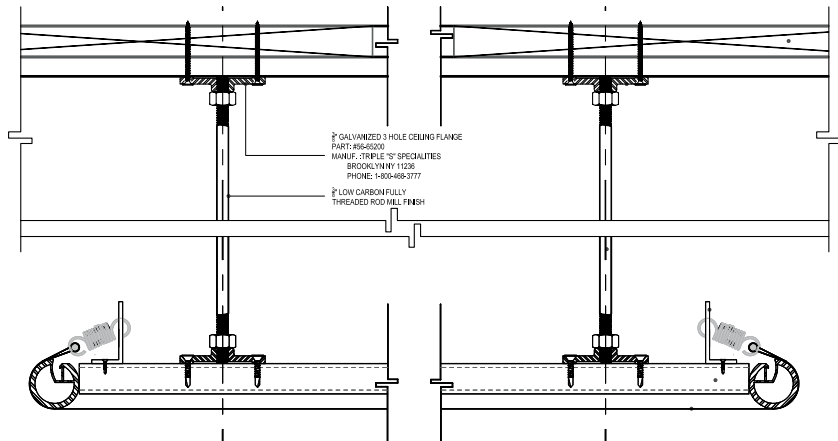
# DETAILS.

Below are some of the details we have engineered for our projects. We often create and extrude new profiles to meet the design or technical needs of a specific project.

## DONUT-SHAPED TRANSLUCENT CLOUD AND FREE-FLOATING MESH SAILS



The donut is backlit by a series of LED lights that continuously change color, creating a soft visual effect. The four curved sails of Newmat Mesh floating below draw the eye to the skylight in the center of the room.



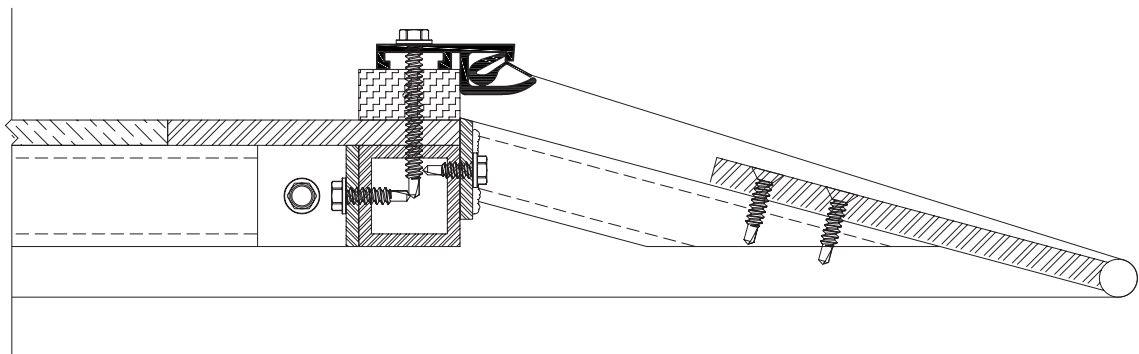
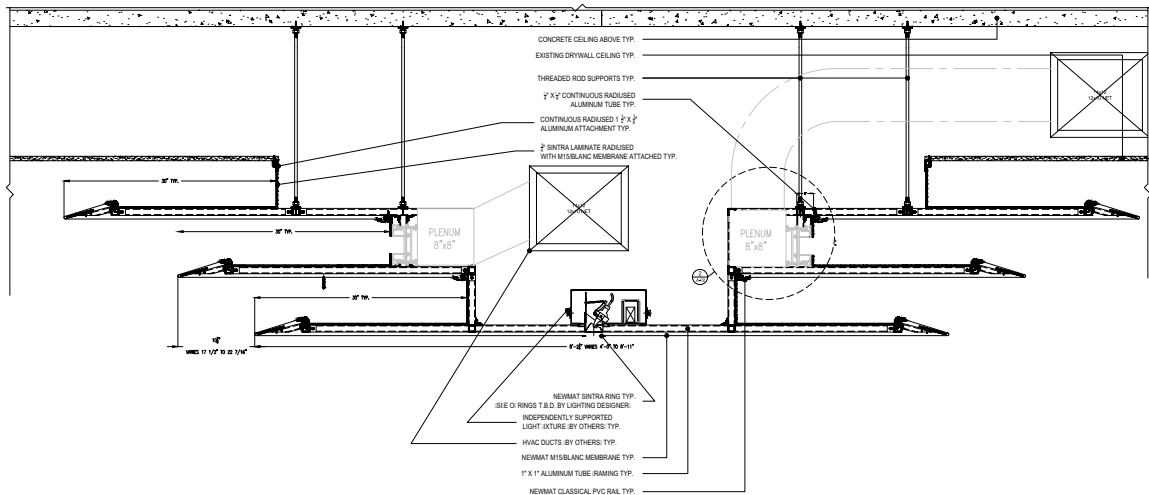




# DETAILS.

Below are some of the details we have engineered for our projects. We often create and extrude new profiles to meet the design or technical needs of a specific project.

## THREE-TIERED FLOATING CURVED CEILING ELEMENT



Andre Kikoski designed this ceiling element, consisting of a three-tiered curved canopy, to flow across the room and extend part-way down one wall. To achieve this design Newmat constructed a custom metal skeleton wrapped with M15/white matte membranes. Light fixtures were then installed between the tiers to create continuous cove lighting.

**Client** The Wright at the Guggenheim / New York, NY, USA

**Specifier** Andre Kikoski / Architect

**Product** Newmat Classic M15 / White Matte Membranes over Custom Aluminum Skeleton

**Client** Queens Museum of Art / Flushing, NY, USA  
**Specifier** Grimshaw Architects / Architect  
**Product** Newmat Acoustic ACM15 / White Matte Micro-Perforated Membranes





# RAILS.

Newmat offers more than 40 different rails/profiles in either PVC or aluminum. They are chosen for a project based on their aesthetic, technical, and/or curving abilities. Newmat often produces custom rails/profiles to meet the specific design requests of our clients.





# COLOR BOOK.

Ac

## Newmat Acoustic

PLAFOND TENDU ACOUSTIQUE  
ACOUSTICAL STRETCH CEILINGS  
AKUSTISCHE SPANNDECKE  
SPANPLAFOND AKOESTISCH  
TECTO ESTENDIDO ACUSTICO  
SOFFITTO TESO ANTI-RUMORE  
TECHOS TENSADOS ACÚSTICOS  
АКУСТИЧЕСКИЙ НАТЯЖНОЙ ПОТОЛОК  
ΑΚΟΥΣΤΙΚΗ ΤΕΤΑΜΕΝΗ ΟΡΟΦΗ

NL

## Newmat Perforated

PLAFOND TENDU PERFORÉ  
PERFORATED STRETCH CEILING  
GELOCHTE SPANNDECKE  
GEPERFOREERD SPANNPLAFOND  
TECHO TENDIDO PERFORADO  
RIVESTIMENTO TAPPEZZATO PERFORATO  
TECTO ESTENDIDO PERFURADO  
ΠΕΡΦΟΡΙΡΩΜΑΝΗΝ ΠΟΤΟΛΟΚ  
ΤΕΝΤΩΜΕΝΟ ΔΙΑΤΡΗΤΟ ΟΡΟΦΗΣ

### LAQUÉS

LACQUER FINISH - LACKEFFEKTE - DE GELAKTE - LOS LACADOS  
IL LACCATO - LACADOS - ЛАКОВЫЙ - ΤΕΛΕΙΩΜΑ ΛΑΚΑ

L 1 - Blanc	NL Ac
L 100 - Blanc	NL Ac
L 101 - Blanc	NL Ac
L 53 - Fumée	NL Ac
L 22 - Mastic	NL Ac
L 5 - Lytchee	NL Ac
L 2 - Perle	NL Ac
L 41 - Plomb	NL Ac
L 42 - Noisette	NL Ac
L 35 - Praliné	NL Ac
L 36 - Bois de rose	NL Ac
L 15 - Tenere	NL Ac
L 43 - Pêche	NL Ac
L 16 - Azalee	NL Ac
L 18 - Rose indien	NL Ac
L 9 - Paille	NL Ac
L 44 - Citron	NL Ac
L 10 - Abricot	NL Ac
L 13 - Mangue	NL Ac
L 45 - Capucine	NL Ac
L 21 - Vermillon	NL Ac
L 54 - Touraine	NL Ac
L 19 - Bordeaux	NL Ac
L 37 - Lie de vin	NL Ac
L 39 - Parme	NL Ac
L 51 - Cobalt	NL Ac
L 26 - Piscine	NL Ac
L 25 - France	NL Ac
L 50 - Outremer	NL Ac
L 38 - Myosotis	NL Ac
L 28 - Caraine	NL Ac
L 49 - Pétrole	NL Ac
L 23 - Nuit	NL Ac

### LAQUÉS

LACQUER FINISH - LACKEFFEKTE - DE GELAKTE - LOS LACADOS  
IL LACCATO - LACADOS - ЛАКОВЫЙ - ΤΕΛΕΙΩΜΑ ΛΑΚΑ

L 401 - Noir	NL Ac
L 32 - Absinthe	NL Ac
L 47 - Twing	NL Ac
L 56 - Nevee	NL Ac
L 29 - Vert anglais	NL Ac
L 57 - Cacao	NL Ac
L 60 - Grenadelle	NL Ac
L 61 - Aquarelle	NL Ac
L 62 - Corossol	NL Ac
L 63 - Vahiné	NL Ac
L 64 - Ivoire	NL Ac

### MATS

MATTE FINISH - MATTEFFEKTE - DE ONGEPOLUSTE - LOS MATES  
OPACO - MATES - ΜΑΤΟΒΟΥΙ - ΤΕΛΕΙΩΜΑ ΜΑΤ

M 15 - Blanc Mat	B Ac
M 17 - Lys	Ac
M 18 - Tilleul	Ac
M 21 - Tourterelle	Ac
M 20 - Ebene	Ac
M 19 - Gris mat	Ac
M 22 - Jade	Ac
M 23 - Soleil	Ac
M 16 - Coquille d'oeuf	Ac
EC 190 - Blanc epais M1	Ac

### SATINÉS

SATIN FINISH - SEIDENGLANZ-EFFEKTE - DE GESATINEERDE - LOS SATINADOS  
IL SATINO - ACETINADAS - CΑΤΙΗ - ΤΕΛΕΙΩΜΑ ΣΑΤΙΝΕ

S 600 - Neige	T Ac
S 601 - Blanc doux	B Ac
S 611 - Vanille	Ac
S 612 - Ananas	B Ac
S 615 - Crème	Ac
S 610 - Pamplemousse	B Ac
S 614 - Saumon	B Ac
S 609 Grenadine	B Ac
S 608 - Coco	B Ac
S 616 - Ocre rouge	Ac
S 618 Opale	Ac
S 605 - Kiwi	B Ac
S 604 - Amandine	B Ac
S 613 - Bleu pastel	Ac
S 617 - Gris basalte	Ac

### TRANSLUCIDES

TRANSLUCENT - LICHTDOORLÄSSIG - TRANSLUCIDO  
DOORSCHIJNEND - TRASLUCIDO - TRANSLUCIDO  
ΠΟΛΥΤΡΩΠΟΠΡΩΚΗΘ - ΗΜΙΣΑΦΑΝΗΣ

T 08	B Ac
T 082	Ac
T 083 M	T Ac
T 083 S	T Ac
T 084	Ac
T 1*	Ac
T 3*	Ac
T 4	Ac

# COLOR BOOK.

## B Newmat Biopruf

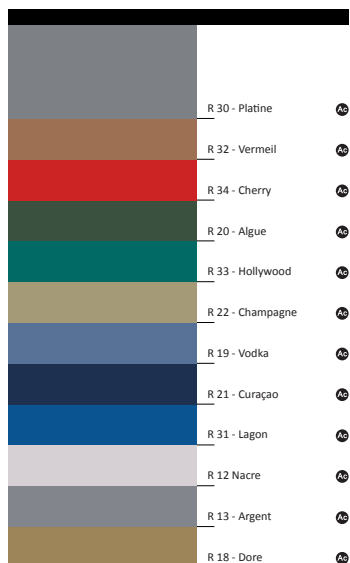
ANTI-MICROBIEN ET ANTI-FONGIQUE  
 ANTIMICROBIAL AND ANTIFUNGAL  
 BAKTERIEN- UND PILZHEMMENDE  
 ANTIMICROBEN-EN ANTISCHIMMELMIDDELEN  
 ANTIBACTERIANO Y FUNGICIDA  
 ANTIMICROBICO E ANTIFUNGO  
 ANTIMICROBIANO E ANTIFÚNGICO  
 АНТИМИКРОБНАЯ И АНТИБАКТЕРИАЛЬНАЯ  
 ΑΝΤΙΜΙΚΡΟΒΙΑΚΩΝ ΚΑΙ ΑΝΤΙ-ΜΥΚΗΤΙΑΚΩΝ

## i Newmat Graphic

PLAFOND TENDU IMPRIMÉ  
 PRINTED STRETCH CEILING  
 BEDRUCKTE SPANDECKE  
 GEDRUKT SPANPLAFOND  
 SOFFITTO TESO STAMPATO  
 TECHO TENSADO IMPRESA  
 ПЕЧАТНАЯ НАТЯЖНОЙ ПОТОЛОК  
 ΤΕΣΤΟ FALSO IMPRESSO  
 ΤΥΠΩΜΕΝΟ ΤΕΤΑΜΕΝΗ ΟΡΟΦΗ

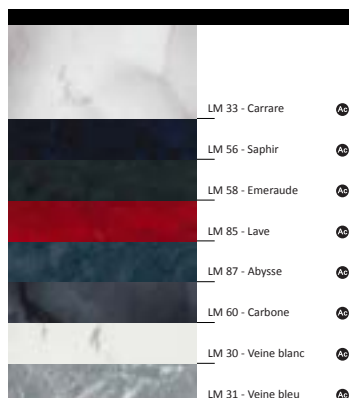
## ASPECTS

DECORS - ASPEKTE - DE ASPECTEN - LOS ASPECTOS - L'ASPECTO  
 ASPECTOS - ВЪЗДОРЪ - ΔΙΑΚΟΣΜΗΤΙΚΑ



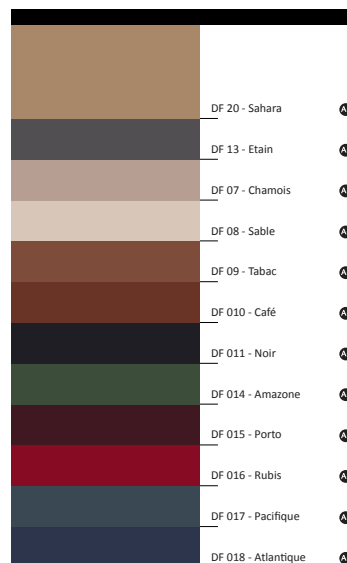
## MARBRES

MARBLE FINISH - MÁRMOLÉS - MARMI - ΜΡΑΜΟΡ - ΜΑΡΜΑΡΑ



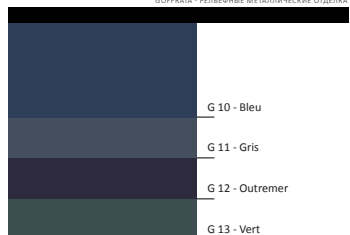
## DAIMS

SUEDE FINISH - WIDLEDEREFFEKTE - DE SUEDE - LOS ANTES  
 LOS CAMOSCIATO - CAMURÇAS - ЗАМШЕВЫЙ - ΤΕΛΕΙΩΜΑ ΣΙΟΥΤ



## GAUFFREES

EMBOSSED METAL FINISH - RELIEF METALEN AFWERKING  
 ACABADO DE METAL EN RELIEVE - METALLO FINITURA  
 ГОТФРА - РЕЛІЄВІНЕ МЕТАЛІНЕСЬКЕ ОЦІЄНКА



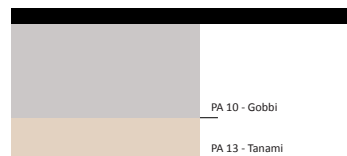
## FASHION

MODE - FASHION - MODA - МОДА - MODA



## PATINÉS

PATINA FINISH - PATINIERT - GEPATINEERD - PATINADO  
 ΠΑΤΙΝΩΡ - ΜΕ ΠΑΤΙΝΑ



## PAILLETTÉ

SPARKLE - GLANS - LANTEJOUILA - БЛЕСЕТКА



**Client** Museum of Natural History / Los Angeles, CA, USA

**Specifier** CO Architects / Architect

**Product** Newmat Light T0B / White Translucent Membranes backlit with LED Boards







**Client** Washington University / Saint Louis, MO, USA

**Specifier** Hartman-Cox Architects / Architect

**Product** Newmat Light & Newmat Acoustic ACT10 / Clear Micro-Perforated Membranes on EZ-Panel System











Newmat USA  
81 Mahan Street, West Babylon, NY, USA  
Tel : 631-261-1498 / Fax : 631-261-1756  
newmat@newmatusa.com

[www.newmatusa.com](http://www.newmatusa.com)